

American Family Immigration History Center  
EXPLORE YOUR FAMILY HISTORY AT



# ELLIS ISLAND



- [► Foundation Membership](#)
- [► Schedules of Work](#)
- [► Your Account](#)
- [► Help](#)

192.168.1.54

- [► PASSENGER SEARCH](#)
- [► FAMILY SCRAPBOOKS](#)
- [► YOUR ELLIS ISLAND FILE](#)
- [► THE IMMIGRANT EXPERIENCE](#)

- [► Passenger Record](#)
- [► Ship Manifest](#)
- [► Ship](#)
- [► View Annotations](#)
- [► Create an Annotation](#)
- [► Back to Search Results](#)

## PASSENGER RECORD

Here is the record for the passenger. Click one of the links on the left to view material related to the passenger.

- [ADD TO YOUR ELLIS ISLAND FILE](#)
- [VIEW ANNOTATIONS](#)



<i>Name:</i>	Petrocco, Americo
<i>Ethnicity:</i>	Italy, South
<i>Place of Residence:</i>	Sassinoro
<i>Date of Arrival:</i>	28 Feb 1906
<i>Age on Arrival:</i>	22y
<i>Gender:</i>	M
<i>Marital Status:</i>	S
<i>Ship of Travel:</i>	Prinzess Irene
<i>Port of Departure:</i>	Naples, Campania, Italy



American Family Immigration History Center  
 EXPLORE YOUR FAMILY HISTORY AT



**ELLIS ISLAND**



Welcome, Michael | [Sign Out](#) | [Become a F](#)

- [▶ Foundation Membership](#)
- [▶ Schedules & Visits](#)
- [▶ Your Account](#)
- [▶ Help](#)

192.168.1.54

[▶ PASSENGER SEARCH](#) [▶ FAMILY SCRAMBLES](#) [▶ YOUR ELLIS ISLAND FILE](#) [▶ THE IMMIGRANT EXPERIENCE](#)

- [▶ Passenger Record](#)
- [▶ Ship Manifest](#)
- [▶ Ship](#)
- [▶ View Annotations](#)
- [▶ Create an Annotation](#)
- [▶ Back to Search Results](#)

## SHIP IMAGE

### The Prinzess Irene

[ADD TO YOUR ELLIS ISLAND FILE](#)

Associated Passenger	Date of Arrival	Port of Departure
Petrocco, Americo	February 28, 1906	Naples

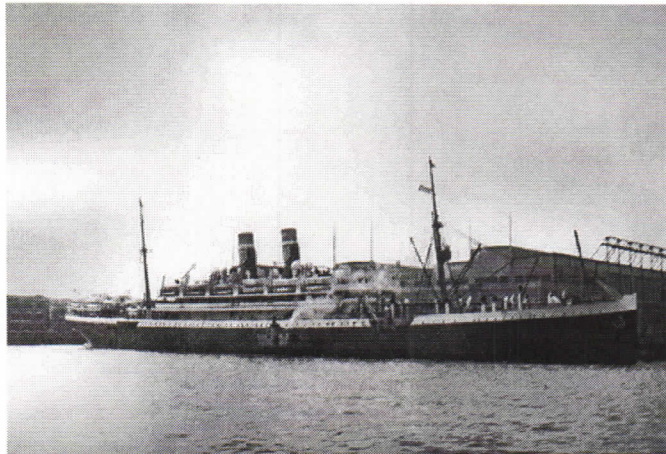


Photo: Peabody Essex Museum

Built by A/G Vulcan Shipyard, Stettin 1900. 10,881 gross tons; 540 (bp) feet wide. Steam quadruple expansion twin screw. Service speed unknown passengers (268 first class, 132 second class, 1,954 third class).

Built for North German Lloyd, German flag, in 1900 and named **Prinzess Irene** for Australia service. Interned at New York. Transferred to U.S. Shipping Board, interned and renamed **USS Pocahontas**. Chartered to the U.S. Mail Steamship Company, in 1919. Mediterranean service. Sold to North German Lloyd, German flag, in 1921 and renamed **Bremen**. Bremerhaven-New York service. Renamed **Karlsruhe** in 1928. Bremen-Mexico service. Scrapped at Bremen 1932. [705]

American Family Immigration History Center  
EXPLORE YOUR FAMILY HISTORY AT



**ELLIS ISLAND**



Welcome, Michael | [Sign Out](#) | [Become a F](#)

- [▶ Foundation Membership](#)
- [▶ Schedule a Visit](#)
- [▶ Your Account](#)
- [▶ Help](#)

192.168.1.54

- ▶ PASSENGER SEARCH**
- [▶ FAMILY SCRIPPTIONS](#)
- [▶ YOUR ELLIS ISLAND FILE](#)
- [▶ THE IMMIGRANT EXPERIENCE](#)

- [▶ Passenger Record](#)
- [▶ Ship Manifest](#)
- [▶ Ship](#)
- [▶ View Annotations](#)
- [▶ Create an Annotation](#)
- [▶ Back to Search Results](#)

## SHIP MANIFEST

Manifests often extend across more than one page. Your passenger may be listed in this page, or a few pages forward or back. To see other pages, click 'previous' or 'next.' Note: each page must be saved separately to Your Ellis Island File.

### Princess Irene

[VIEW ORIGINAL MANIFEST](#)

Associated Passenger	Date of Arrival	Port of Departure	Line #	Page
Petrocco, Americo	February 28, 1906	Naples	0021	<a href="#">previ</a>

### Manifest for Princess Irene

Sailing from Naples

Name	Gender	Age	Married	Ethnicity	Place of
0001. <a href="#">De Cesare, Raffaele</a>	M	26y	M	Italian, South	U.S.
0002. <a href="#">Zavarella, Antonio</a>	M	26y	M	Italian, South	Protota
0003. <a href="#">De Cesare, Pietro</a>	M	15y	S	Italian, South	Protota
0004. <a href="#">Cipitelli, Giuseppe</a>	M	23y	S	Italian, South	Nocera
0005. <a href="#">Mazza, Berardino</a>	M	30y	M	Italian, South	Pizzoli
0006. <a href="#">Di Stefano, Orazio</a>	M	17y	S	Italian, South	Pizzoli
0007. <a href="#">Cicchetti, Giovanni</a>	M	22y	S	Italian, South	Pizzoli
0008. <a href="#">Cantinelli, Ernesto</a>	M	18y	S	Italian, South	S. Biase
0009. <a href="#">Cantinelli, Achille</a>	M	21y	S	Italian, South	S. Biase
0010. <a href="#">Gagnacoro, Salvatore</a>	M	38y	M	Italian, South	S. Biase
0011. <a href="#">D Andrea, Domenico</a>	M	29y	M	Italian, South	Italy
0012. <a href="#">Venditti, Nicola</a>	M	34y	M	Italian, South	Italy
0013. <a href="#">Brara, Angelo</a>	M	28y	M	Italian,	Italy

0014.	<u>Mattiacci, Raffaele</u>	M	26y	M	South Italian, South	Italy
0015.	<u>Mattiacci, Domenico</u>	M	14y	S	Italian, South	Italy
0016.	<u>Di Valerio, Filomena</u>	F	22y	M	Italian, South	U.S.
0017.	<u>Di Domenico, Stefano</u>	M	3y	S	U.S. Born	Alfedena
0018.	<u>Di Domenico, Domenico</u>	M	3m	S	Italy, South	Alfedena
0019.	<u>Prezoso, Giuseppe</u>	M	23y	S	Italy, South	Sasso Ca
0020.	<u>Petrocco, Romilda</u>	F	20y	S	Italy, South	Sassinoro
0021.	<u>Petrocco, Americo</u>	M	22y	S	Italy, South	Sassinoro
0022.	<u>Fantana, Maria</u>	F	21y	S	Italy, South	Sulmona
0023.	<u>Ramunno, Vincenzo</u>	M	38y	M	Italy, South	Sulmona
0024.	<u>Santorosa, Guilio</u>	M	40y	M	Italy, South	Sulmona
0025.	<u>La Morticella, Paolo</u>	M	17y	S	Italy, South	Sulmona
0026.	<u>Giammasco, Pietro</u>	M	18y	S	Italy, South	Sulmona
0027.	<u>Di Lollo, Giuseppe</u>	M	19y	S	Italy, South	Sulmona
0028.	<u>Di Meo, Panfilo</u>	M	21y	S	Italy, South	Sulmona
0029.	<u>Fracassi, Cesare</u>	M	18y	S	Italy, South	Sulmona
0030.	<u>Trinelinni, Dom. Fortuneti</u>	M	18y	S	Italy, South	Sulmona

Associated Passenger	Date of Arrival	Port of Departure	Line #	Pag
Petrocco, Americo	February 28, 1906	Naples	0021	<a href="#">previ</a>

[VIEW ORIGINAL MANIFEST](#)

American Family Immigration History Center

EXPLORE YOUR FAMILY HISTORY AT



# ELLIS ISLAND



- [Find records: Membership](#)
- [Schedules on View](#)
- [Your Account](#)
- [Help](#)

192.168.1.84

- [PASSENGER SEARCH](#)
- [FAMILY SCRIPBOOKS](#)
- [YOUR ELLIS ISLAND FILE](#)
- [THE IMMIGRANT EXPERIENCE](#)
- [GIFT](#)

- [Passenger Record](#)
- [Ship Manifest](#)
- [Ship](#)
- [View Annotations](#)
- [Create an Annotation](#)
- [Back to Search Results](#)

## PASSENGER RECORD

Here is the record for the passenger. Click one of the links on the left to view material related to the passenger.

- [ADD TO YOUR ELLIS ISLAND FILE](#)
- [VIEW ANNOTATIONS](#)



<i>Name:</i>	Cerro, Benedetta
<i>Ethnicity:</i>	S.Italian
<i>Place of Residence:</i>	Pouterorvo, Caserta
<i>Date of Arrival:</i>	11 Feb 1914
<i>Age on Arrival:</i>	22
<i>Gender:</i>	F
<i>Marital Status:</i>	M
<i>Ship of Travel:</i>	Prinzess Irene
<i>Port of Departure:</i>	Naples, Campania, Italy

American Family Immigration History Center

EXPLORE YOUR FAMILY HISTORY AT



**ELLIS ISLAND**



- [► Foundation Membership](#)
- [► Schedule a Visit](#)
- [► Your Account](#)
- [► Help](#)

192.168.1.84

- [► PASSENGER SEARCH](#)
- [► FAMILY SCRAPBOOKS](#)
- [► YOUR ELLIS ISLAND FILE](#)
- [► THE IMMIGRANT EXPERIENCE](#)
- [► GIFT](#)

- [► Passenger Record](#)
- [► Ship Manifest](#)
- [► Ship](#)
- [► View Annotations](#)
- [► Create an Annotation](#)
- [► Back to Search Results](#)

## SHIP MANIFEST

Manifests often extend across more than one page. Your passenger may be listed in this page, or a few pages forward or back. To see other pages, click 'previous' or 'next.' Note: each page must be saved separately to Your Ellis Island File.

### Princess Irene

[VIEW ORIGINAL MANIFEST](#)

Associated Passenger	Date of Arrival	Port of Departure	Line #	Page #
Cerro, Benedetta	February 11, 1914	Naples	0005	<a href="#">previous</a>

### Manifest for Princess Irene

Sailing from Naples

Name	Gender	Age	Married	Ethnicity	Place of Reside
0001. <a href="#">Palumbo, Michele</a>	M	67	M	S.Italian	Campobasso
0002. <a href="#">Salotto, Fioruega</a>	F	59	M	S.Italian	Campobasso
0003. <a href="#">Cristiano, Teresa</a>	F	48	M	S.Italian	Napoli
0004. <a href="#">Petrocio, Almerico</a>	M	29	M	S.Italian	Pouterorvo, Cas
0005. <a href="#">Cerro, Benedetta</a>	F	22	M	S.Italian	Pouterorvo, Cas
0006. <a href="#">Amah, Alfonso</a>	M	28	M	S.Italian	Grassaus, Petue
0007. <a href="#">Albanese, Giuseppe</a>	M	25	S	S.Italian	New York, USA
0008. <a href="#">Bertone, Giovanni</a>	M	22	S	S.Italian	Maddaloni, Case
0009. <a href="#">Della Ventura, Ciro</a>	M	49	M	S.Italian	Maddaloni, Case
0010. <a href="#">Genova, Vincenzo</a>	M	23	S	S.Italian	San Felice Slavo
0011. <a href="#">Caruso, Pasquale</a>	M	40	M	S.Italian	Campbasso
0012. <a href="#">Pellegrine, Lucia</a>	F	33	M	S.Italian	Franklyn For..., Castelfranco, Benevente
0013. <a href="#">Volpirella, Michele</a>	M	32	S	S.Italian	Ruvo, Bari
0014. <a href="#">Cruriani, Maria ..ola</a>	F	36	M	S.Italian	Apricena, Foggia
0015. <a href="#">Di Vinnio, Nazzarino</a>	M	11	S	S.Italian	Apricena, Foggia
0016. <a href="#">Di Vinnio, Martino</a>	M	7	S	S.Italian	Apricena, Foggia
0017. <a href="#">Rizzuti, Salvatore</a>	M	39	M	Canadian	Panettieri, Cose
0018. <a href="#">Capstas, George</a>	M	30	S	Greek	Sparta, Greece
0019. <a href="#">Dimitzas, Angelo</a>	M	28	S	Greek	Cariston, Greece
0020. <a href="#">Erecano, Nicola</a>	M	44	M	S.Italian	Napoli
0021. <a href="#">Sepe, Luisa</a>	F	43	M	S.Italian	Napoli
0022. <a href="#">Erecano, Giuseppina</a>	F	8	S	S.Italian	Napoli
0023. <a href="#">Carrino, Alberto</a>	M	37	M	S.Italian	Napoli
0024. <a href="#">Paceale, Lucia</a>	F	26	M	S.Italian	Maddalini, Caser
0025. <a href="#">Savastrano, Angelina</a>	F	18	S	S.Italian	Maddalini, Caser
0026. <a href="#">Caruso, ... Vito</a>	M	19	S	S.Italian	S.Azata di Puglia



# ELLIS ISLAND



- [▶ Foundation Membership](#)
- [▶ Schedules on View](#)
- [▶ Your Account](#)
- [▶ Help](#)

192.168.1.54

- [▶ PASSENGER SEARCH](#)
- [▶ FAMILY SCRAPBOOKS](#)
- [▶ YOUR ELLIS ISLAND FILE](#)
- [▶ THE IMMIGRANT EXPERIENCE](#)
- [▶ GIFT](#)

▶ [Passenger Record](#)

▶ [Ship Manifest](#)

▶ [Ship](#)

▶ [View Annotations](#)

▶ [Create an Annotation](#)

▶ [Back to Search Results](#)

## SHIP IMAGE

### The Prinzess Irene

[ADD TO YOUR ELLIS ISLAND FILE](#)

Associated Passenger	Date of Arrival	Port of Departure
Cerro, Benedetta	February 11, 1914	Naples

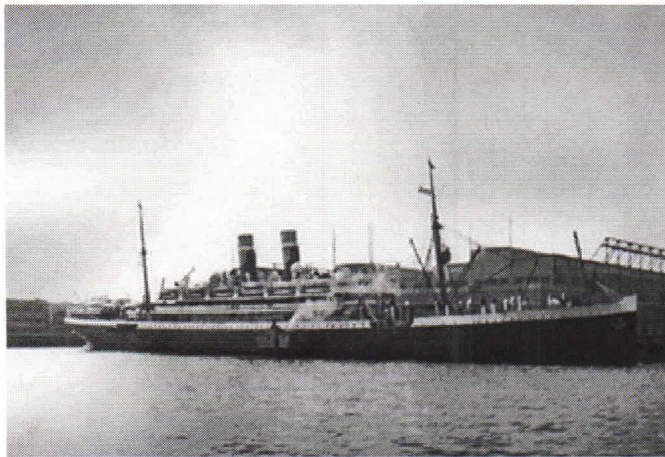


Photo: Peabody Essex Museum

Built by A/G Vulcan Shipyard, Stettin, German 1900. 10,881 gross tons; 540 (bp) feet long; feet wide. Steam quadruple expansion engine twin screw. Service speed unknown knots. 2, passengers (268 first class, 132 second class, 1,954 third class).

Built for North German Lloyd, German flag, in 1900 and named **Prinzess Irene** Bremerhav Australia service. Interned at New York 1914 Transferred to U.S. Shipping Board, in 1917 a renamed **USS Pocahontas**. Chartered by U.S Mail Steamship Company, in 1919. New York-Mediterranean service. Sold to North German Lloyd, German flag, in 1921 and renamed **Bremen**. Bremerhaven-New York service. Renamed **Karlsruhe** in 1928. Bremerhaven-G of Mexico service. Scrapped at Bremerhaven i 1932. [705]

American Family Immigration History Center

EXPLORE YOUR FAMILY HISTORY AT



ELLIS ISLAND



Welcome, [Richard](#) | [Sign out](#) | [My Account](#)

[Foundation Membership](#)

[Schedule a Visit](#)

[Your Account](#)

[Help](#)

192.168.1.84

[PASSENGER SEARCH](#) [FAMILY SCRAPBOOKS](#) [YOUR ELLIS ISLAND FILE](#) [THE IMMIGRANT EXPERIENCE](#) [GIFT](#)

[Passenger Record](#)

[Ship Manifest](#)

[Ship](#)

[View Annotations](#)

[Create an Annotation](#)

[Back to Search Results](#)

## SHIP IMAGE

You can purchase this image and information by clicking "Add to Shopping Cart."

### The Aller

Associated Passenger	Date of Arrival	Port of Departure
Lodico, Salvatore	May 20, 1902	Naples



Purchase this item

Choose a size:

5x7 \$10.00

11x17 \$12.50

[ADD TO SHOPPING CART](#)

Built by Fairfield Shipbuilding & Engineering Company, Glasgow, Scotland, 1886. 5,217 gross tons; 455 (bp) feet long; 48 feet wide. Steam triple expansion engine, single screw. Service speed 17 knots. 1,240 passengers (150 first class, 90 second class, 1,000 third class).

Built for North German Lloyd, German flag, in 1886 and named **Aller**. Bremerhaven-New York and Mediterranean-New York service. Scrapped 1904.

Photo: Frank Pichardo Collection

American Family Immigration History Center

EXPLORE YOUR FAMILY HISTORY AT



ELLIS ISLAND



- [Home](#) | [About Us](#) | [Sign Out](#)
- [Foundation Membership](#)
- [Schedule a Visit](#)
- [Your Account](#)
- [Help](#)

192.168.1.84

- ▶ PASSENGER SEARCH**
- ▶ FAMILY SCRAPBOOKS
- ▶ YOUR ELLIS ISLAND FILE
- ▶ THE IMMIGRANT EXPERIENCE
- ▶ GIFT!

- ▶ **Passenger Record**
- ▶ **Ship Manifest**
- ▶ **Ship**
- ▶ **View Annotations**
- ▶ **Create an Annotation**
- ▶ **Back to Search Results**

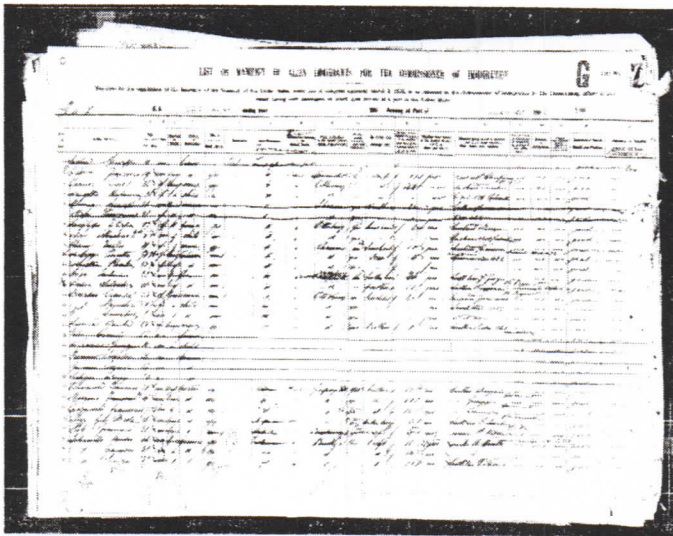
## SHIP MANIFEST

Manifests often extend over more than one page. Your passenger may be listed in this page, or a few pages forward or back. To see any other pages, click "previous" or "next." You can purchase a page by clicking "Add to Shopping Cart." There is a fee for each page purchased.

### The Aller

- [ADD TO YOUR ELLIS ISLAND FILE](#)
- [VIEW TEXT VERSION MANIFEST](#)

Associated Passenger	Date of Arrival	Port of Departure	Line #
Salvatore Lodico	May 20, 1902	Naples	0013



- [ADD TO YOUR ELLIS ISLAND FILE](#)
- [VIEW TEXT VERSION MANIFEST](#)

Frame # 0282  
[previous](#) [next](#)  
[Back to original page](#)

[Click to enlarge manifest](#)

Purchase this item  
 Choose a size:  
 11x17 \$25.00  
 17x22 \$35.00

[ADD TO SHOPPING CART](#)

American Family Immigration History Center

EXPLORE YOUR FAMILY HISTORY AT



**ELLIS ISLAND**



Welcome, Michael | [Sign Out](#) | [My Account](#)

[▶ Foundation Membership](#)

[▶ Schedule a Visit](#)

[▶ Your Account](#)

[▶ Help](#)

192.168.1.84

[▶ PASSENGER SEARCH](#)

[▶ FAMILY SCRAPBOOKS](#)

[▶ YOUR ELLIS ISLAND FILE](#)

[▶ THE IMMIGRANT EXPERIENCE](#)

[▶ GIFT!](#)

[▶ Passenger Record](#)

[▶ Ship Manifest](#)

[▶ Ship](#)

[▶ View Annotations](#)

[▶ Create an Annotation](#)

[▶ Back to Search Results](#)

## SHIP MANIFEST

Manifests often extend over more than one page. Your passenger may be listed in this p or a few pages forward or back. To see other pages in the manifest, click "previous" or "next." To save or purchase, click "View Original Manifest."

### Aller

[VIEW ORIGINAL MANIFEST](#)

Associated Passenger	Date of Arrival	Port of Departure	Line #	Page #
Lodico, Salvatore	May 20, 1902	Naples	-	<a href="#">previous</a> <a href="#">Original p</a>

### Manifest for Aller

Sailing from Naples

Name	Gender	Age	Married	Ethnicity	Place of Reside
0001. <a href="#">Gebbia, Giuseppe</a>	M	32y	U	Italian	Campofalice
0002. <a href="#">Gebbia, Francesco</a>	M	19y	S	Italian	Campofalice
0003. <a href="#">Scanio, Lucia</a>	F	22y	M	Italian	Campofalice
0004. <a href="#">Scanio, Antonina</a>	F	3y	S	Italian	Campofalice
0005. <a href="#">Messina, Giuseppe</a>	M	28y	M	Italian	Campofalice
0006. <a href="#">Missina, Providenza</a>	F	28y	M	Italian	Campofalice
0007. <a href="#">Sanfilippo, Filippa</a>	F	27y	M	Italian	Campofalice
0008. <a href="#">Sanfilippo, Martino</a>	M	6y	S	Italian	Campofalice
0009. <a href="#">D...</a>					
0009. <a href="#">Glorioso, Tecla</a>	F	21y	U	Italian	Campofalice
0010. <a href="#">di Maggio, Concetta</a>	F	53y	M	Italian	Campofalice
0011. <a href="#">di Maggio, Rosalia</a>	F	13y	S	Italian	Campofalice
0012. <a href="#">Coco, Antonino</a>	M	22y	M	Italian	Campofalice
0013. <a href="#">Lodico, Salvatore</a>	M	14y	S	Italian	Campofalice
0014. <a href="#">Bonaldo, Carmela</a>	F	33y	M	Italian	Campofalice
0015. <a href="#">Bonaldo, Maricchia</a>	F	9y	S	Italian	Campofalice
0016. <a href="#">Bonaldo, Salvatore</a>	M	5y	S	Italian	Campofalice
0017. <a href="#">Larocca, Santa</a>	F	23y	S	Italian	Campofalice
0018. <a href="#">Vetri, Carmelo</a>	M	28y	U	Italian	
0019. <a href="#">di Franco, Giuseppe</a>	M	10y	S	Italian	
0020. <a href="#">Gunuro, Salvatore</a>	M	26y	U	Italian	
0021. <a href="#">G..., Carmelo</a>	M	28y	U	Italian	
0022. <a href="#">Calagero, Librizzi</a>	M	29y	U	Italian	
0023. <a href="#">Bananca, Domenico</a>	M	28y	S	Italian	Siderno
0024. <a href="#">Marzano, Francesco D</a>	M	16y	S	Italian	Siderno
0025. <a href="#">Fragomeni, Francesco</a>	M	17y	S	Italian	Siderno
0026. <a href="#">Pizzi, Gius. Nicola</a>	M	26y	M	Italian	Aguano
0027. <a href="#">Pati, Francesco</a>	M	22y	M	Italian	Amantea
0028. <a href="#">Tulianiello, Andeo</a>	M	34y	M	Italian	Cartelinossone
0029. <a href="#">Tulianiello, Francesco</a>	M	37y	M	Italian	Cartelinossone

American Family Immigration History Center

EXPLORE YOUR FAMILY HISTORY AT



ELLIS ISLAND



Welcome, Michael | [Sign Out](#) | [Welcome to Ellis Island](#)

- [▶ Foundation Membership](#)
- [▶ Schedule a Visit](#)
- [▶ Your Account](#)
- [▶ Help](#)

192.168.1.84

[▶ PASSENGER SEARCH](#) [▶ FAMILY SCRAPBOOKS](#) [▶ YOUR ELLIS ISLAND FILE](#) [▶ THE IMMIGRANT EXPERIENCE](#) [▶ GIFT!](#)

Until 1921 - (Campofelice) ~~San Bartolomeo~~  
" " " " BI Rocelle

- [▶ Passenger Record](#)
- [▶ Ship Manifest](#)
- [▶ Ship](#)
- [▶ View Annotations](#)
- [▶ Create an Annotation](#)
- [▶ Back to Search Results](#)

### PASSENGER RECORD

After 1921 - " "

Here is the record for the passenger. Click one of the links on the left to view material related to the passenger.

Province of Palermo  
Sicily  
90030  
90010

[ADD TO YOUR ELLIS ISLAND FILE](#) [VIEW ANNOTATIONS](#)



**PASSENGER RECORD**

<b>Name:</b>	Lodico, Salvatore
<b>Ethnicity:</b>	Italian
<b>Place of Residence:</b>	Campofalice
<b>Date of Arrival:</b>	20 May 1902
<b>Age on Arrival:</b>	14y
<b>Gender:</b>	M
<b>Marital Status:</b>	S
<b>Ship of Travel:</b>	Aller
<b>Port of Departure:</b>	Naples, Campania, Italy

